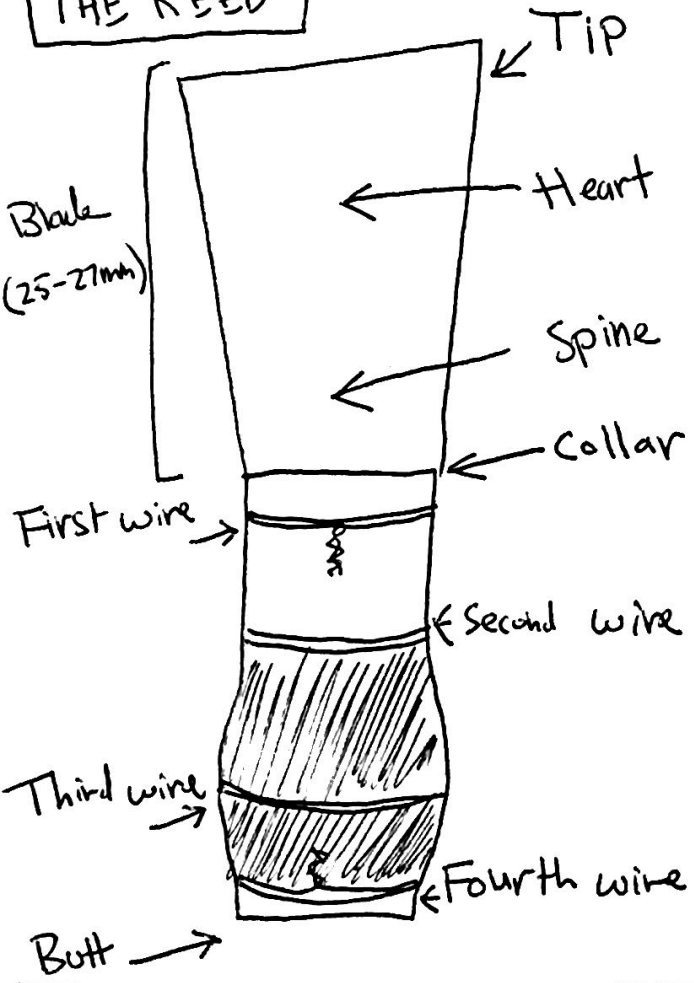
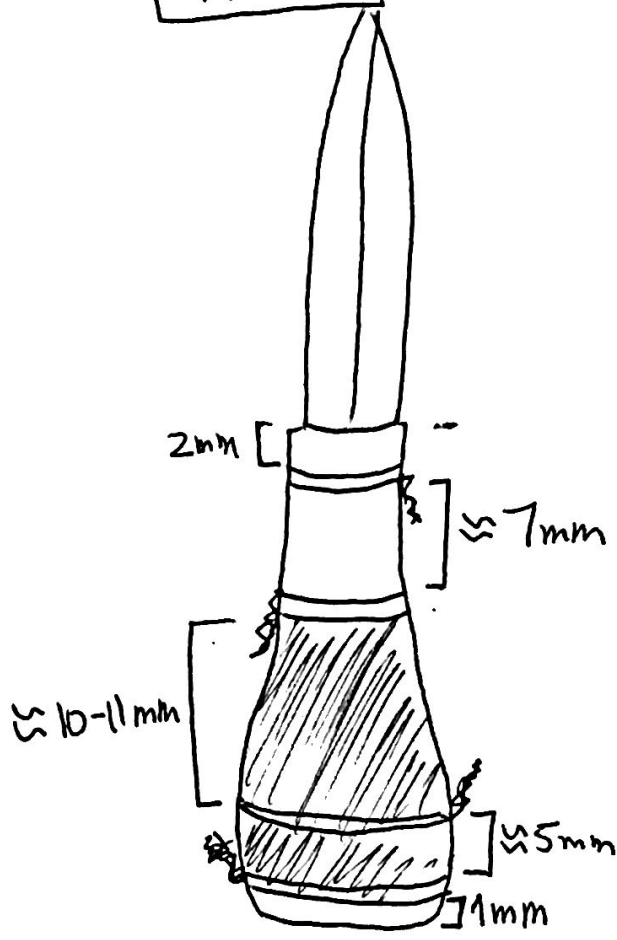


THE REED

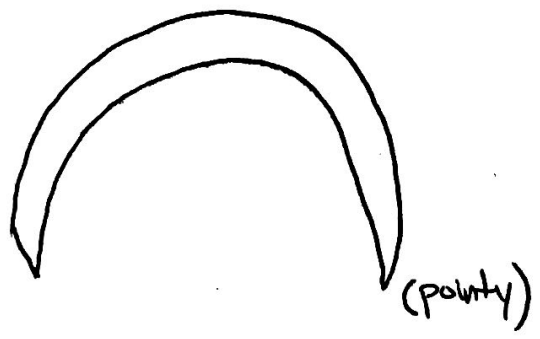


WIRES

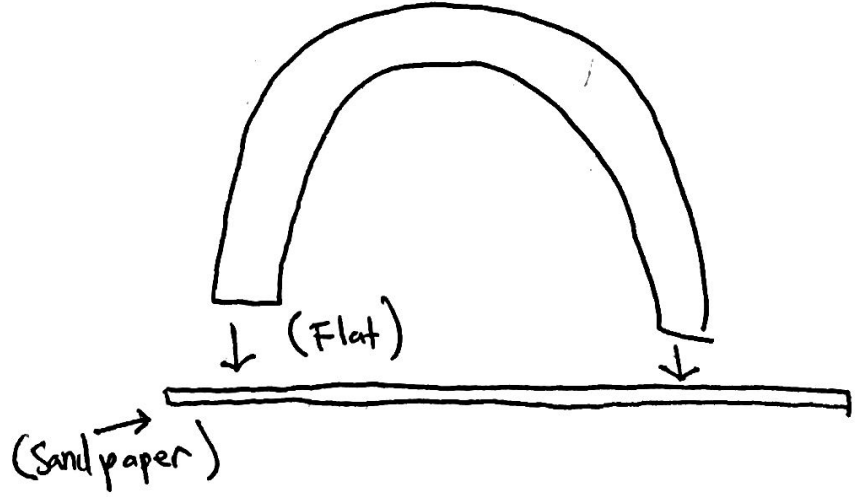


BEVELING

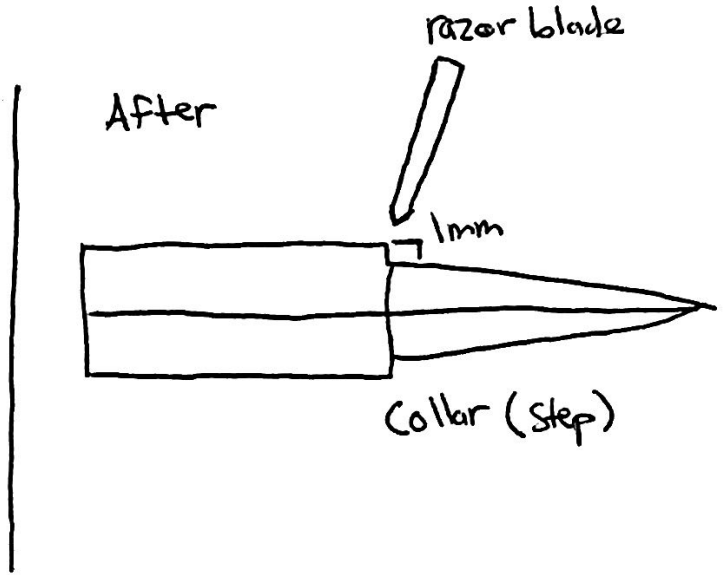
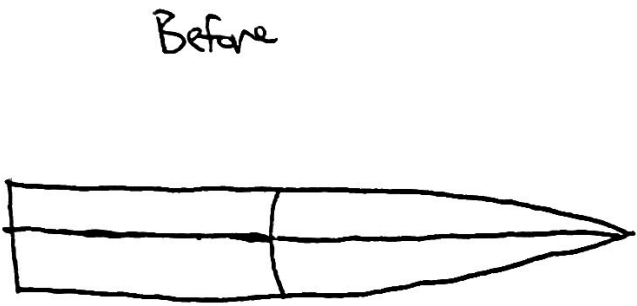
Formed Tube (Before)



Formed Tube (After)



FORMING COLLAR



(You can take cane off, but you can't put it back.)

SCRAPING + BLENDING

- Tip is thinnest
- Back is thickest
- Define tip first
- Test, clip
- File Rails
- if necessary, scrape channels
- Tune + adjust as needed

